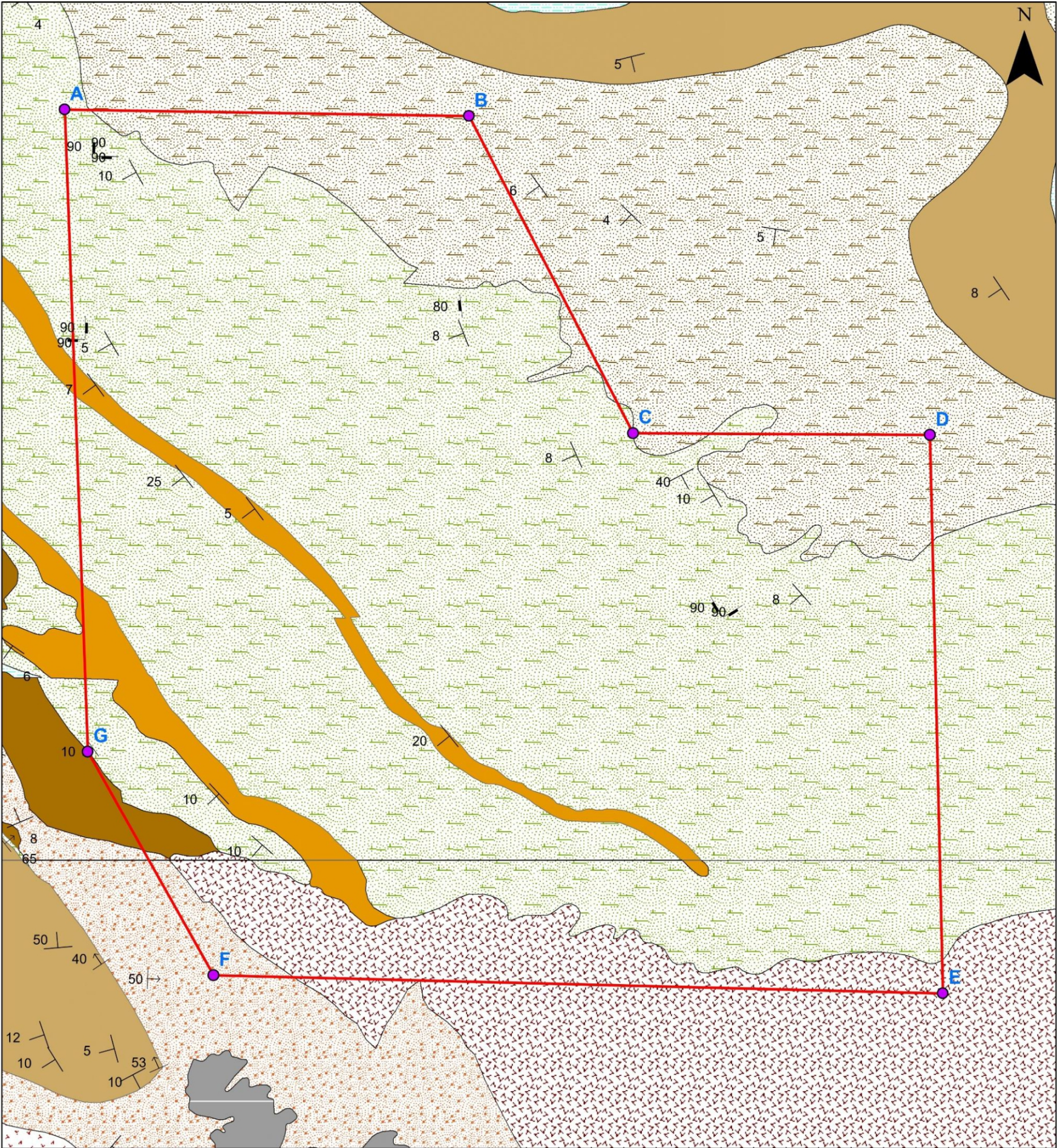
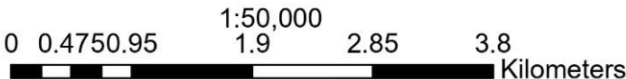


REGIONAL GEOLOGICAL MAP SHOWING THE AMBARA MARU BLOCK

GEOLOGICAL MAP OF AMBARA MARU BLOCK (PART OF TOPOSHEET NO: (41E/02 & 41E/03),
AREA ; 94.25 Sq.km, DISTRICT: KACHCHH, GUJARAT



Source:(NGDR Portal, Part of Toposheet 41E/02 & 41E/03, Kachchh district, Gujarat)



INDEX

- Cardinal Points of Ambara Maru Block
□ Ambara Maru Block Boundary
- BEDDING
— JOINT
— FAULT
- Lithology**
■ AMYGDULAR BASALT
- FELDSPATHIC SANDSTONE AND GRIT
■ FELDSPATHIC SANDSTONE, SHALE WITH AMMONITE FOSSILS
■ FERRUGINOUS SANDSTONE AND GRIT
■ FOSSILIFEROUS SHALE WITH INTERCALATED LIMESTONE
■ GLAUCONITIC SST OOLITIC LST. SHALE, CONGLOMERATE
■ SANDSTONE, SHALE WITH PLANT FOSSILS
■ SANDSTONE, SHALE WITH TRIGONIA FOSSILS
■ SANDSTONE, SHALE, CLAY, CONGLOMERATE
■ SHALE WITH CALCAREOUS SANDSTONE



MINERAL EXPLORATION & CONSULTANCY LIMITED

REGIONAL GEOLOGICAL MAP

NOT TO SCALE

AMBARA-MAU BLOCK

AREA: 94.25 Sq. Km

DISTRICT: KACHCHH

STATE: GUJARAT

PROCESSED AT:
EXPLORATION
DIVISION,
MECL, NAGPUR

PREPARED BY : JALADI MADHU BABU (MANGER GEOLOGY)
CHECKED BY : SHRI BHUNESHWAR KUMAR(MANAGER, GEOLOGY)
APPROVED BY: SHRI SHRIKANT SHARMA H.O.D (EXPLORATION)

MECL/EXPL/APR.2026

PLATE-II

II